

## **LIST of wearing parts**

**J-TOWsj100**

**When ordering spare parts, please indicate:**

- **year of manufacturing**
- **serial number**
- **part number**
- **designation of part**
- **quantity**

**Wear parts:**

Standard wear parts (WP) are in the following parts lists designated as follows:

WP1: Shear pins and the surrounding parts  
WP2: Retaining pin and the surrounding parts  
WP3: Handpump  
WP4: Tires

**Parts can be ordered at:**

**JMS AG**  
**Jet Maintenance & Service**  
**Rainer-Haungs-Strasse 42**  
**77933 Lahr/Germany**

**Tel: +49 (0)7821-9 94 69 - 0**  
**Fax: +49 (0)7821-9 94 69 - 100**  
**E-mail: [sales@jms.aero](mailto:sales@jms.aero)**



## List of fastening torques

Except for retaining bolt replacement (refer to chapter 4.2) all bolts have to be tightend using standard tightening torques as per table after replacing components.

Bolt size	Tightening torque* [Nm]		Tightening torque* [lb ft.]	
	class 8.8	class 10.9	class 8.8	class 10.9
<b>M8</b>	<b>23,1</b>	<b>33</b>	<b>17,0</b>	<b>24,3</b>
<b>M10</b>	<b>46</b>	<b>66</b>	<b>33,9</b>	<b>48,6</b>
<b>M12</b>	<b>80</b>	<b>115</b>	<b>59</b>	<b>84,8</b>
<b>M16</b>	<b>194</b>	<b>280</b>	<b>143</b>	<b>206,5</b>
<b>M20</b>	<b>391</b>	<b>550</b>	<b>288</b>	<b>405,6</b>

\*coefficient of friction  $\mu = 0,12$  (lightly oiled) / 90% of screws yield strength



### 1.1. Parts list - J-TOWhead for SSJ100 - rigid - see figure 6.1

No.	WP	Part number	Designation	Quantity
1		20-00160-0020-010	Plate	1
2		00.36790.0019C	Slide bar	1
3		00.35800.0006C	Cover	1
5		20-00020-0020-017	Handle	1
6		00.35800.0009C	Support	2
7		00.35800.0010B	Plate	1
8	2	<b>00.35800.0013</b>	<b>Bushing</b>	<b>1</b>
9	2	<b>00.40070.0014</b>	<b>Rubber bushing</b>	<b>1</b>
10	1	<b>20-00161-0020-022</b>	<b>Shear pin "AP1" (incl. D-Ring)</b>	<b>6 (2+4spare)</b>
11	1	<b>00.35800.0017</b>	<b>Bushing</b>	<b>2</b>
12	1	<b>20-00190-0020-024</b>	<b>Bushing (incl. spring plungers)</b>	<b>2</b>
13	2	<b>20-00190-0020-025</b>	<b>Bushing</b>	<b>2</b>
14		00049	D-Ring (enclosed in Pos. 10)	6
15	2	<b>20-00160-0020-021</b>	<b>Retaining bolt "AP-FB"</b>	<b>1</b>
16	2	<b>ISO10511-M16</b>	<b>Nut</b>	<b>1</b>
17		20-00160-0020-006	Plate	2
18		00.40080.0031	Flange	1
19		ISO4017-M12x60 10.9	Screw	6
20		ISO7090-13	Washer	6
21		00.38280.0002-42	Washer	6
22		ISO10511-M12 10	Nut	6
23		ISO4014-M12x110	Screw	2
24		00.38280.0002-42	Washer	4
25		ISO7090-13	Washer	4
26		ISO10511-M12	Nut	4
27		ISO4014-M10x55	Screw	4
28		00.38280.0300-20	Washer	4
29		ISO4014-M10x65	Screw	3
30		ISO7090-10,5	Washer	6
31		ISO10511-M10	Nut	3
32		ISO4017-M8x35	Screw	2
33		00.38280.0100-19	Washer	2
34		ISO4762-M5x8	Screw	1
35		08.38150.0001-16	Cable	1
36		00.25270.1481	Handle grip (incl. in Pos. 5)	1
37		08.40070.0002-28	Safety-Pin	1
38		00.38270.0200-06	Ring	1
39		08.40070.0002-37	Spring plunger	1
40		00.40080.0050A	Carrier	1
41		ISO4017-M10x14	Screw	2
42		00.38280.0300-20	Washer	2
43		20-00190-0020-050	Screw	2
44		20-00160-0015-001	Label "SSJ 100"	2

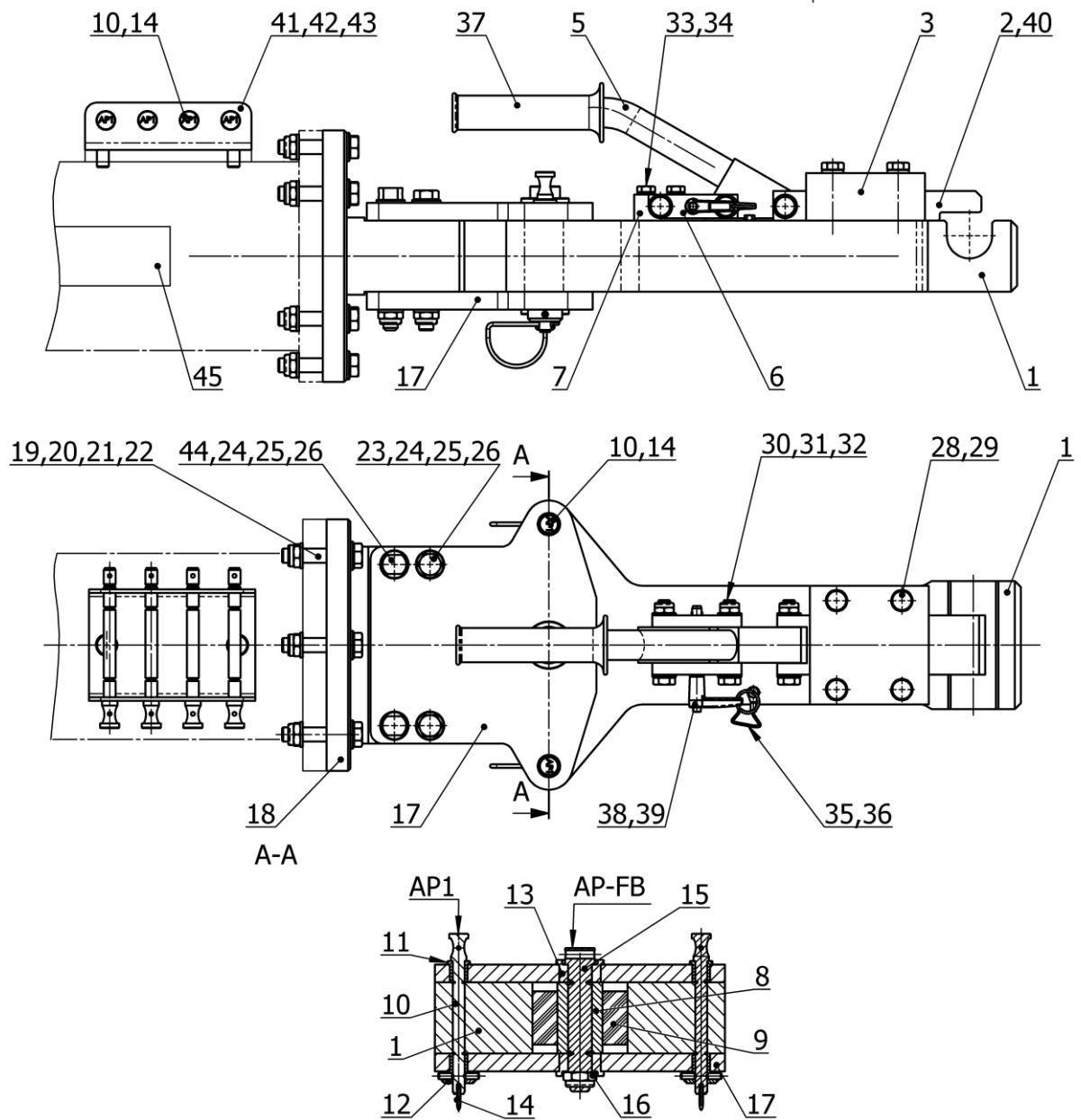


Figure 6.1: Towhead



## 1.2. Parts list - J-TOWhead for SSJ100 - revolving - see figure 6.2 - OPTION -

No.	WP	Part number	Designation	Quantity
1		20-00160-0020-010	Plate	1
2		00.36790.0019C	Slide bar	1
3		00.35800.0006C	Cover	1
4		00.40080.0042	Plate	1
5		20-00020-0020-017	Handle	1
6		00.35800.0009D	Support	2
7		20-00190-0020-036	Plate	1
8	2	00.35800.0013	Bushing	1
9	2	00.40070.0014	Rubber bushing	1
10	1	20-00161-0020-022	Shear pin "AP1" (incl. D-Ring)	6 (2+4spare)
11	1	00.35800.0017	Bushing	2
12	1	20-00190-0020-024	Bushing (incl. spring plungers)	2
13	2	20-00190-0020-025	Bushing	2
14		00049	D-Ring (enclosed in Pos. 10)	6
15	2	20-00160-0020-021	Retaining bolt "AP-FB"	1
16	2	ISO10511-M16	Nut	1
17		20-00160-0020-006	Plate	2
18		00.40080.0041	Flange	1
19		ISO4017-M12x60 10.9	Screw	6
20		ISO7090-13	Washer	6
21		00.38280.0002-42	Washer	6
22		ISO10511-M12 10	Nut	6
23		ISO4014-M12x110	Screw	2
24		00.38280.0002-42	Washer	4
25		ISO7090-13	Washer	4
26		ISO10511-M12	Nut	4
27		DIN71412 M8-H1	Grease nipple	1
28		ISO4014-M10x55	Screw	4
29		00.38280.0300-20	Washer	4
30		ISO4014-M10x65	Screw	3
31		ISO7090-10,5	Washer	6
32		ISO10511-M10	Nut	3
33		ISO4014-M8x50	Screw	2
34		00.38280.0100-19	Washer	2
35		00373	Safety pin	1
36		20-00190-0020-035	Support for safety pin	1
37		DIN935-M42	Nut	1
38		20-00190-0020-015	Washer	1
39		ISO1234-8x80	Cotter-pin	1
40		08.40070.0002-37	Spring plunger	1
41		00.40080.0050A	Carrier	1
42		ISO4017-M10x14	Screw	2
43		00.38280.0300-20	Washer	2
44		20-00190-0020-050	Screw	2
45		20-00160-0015-001	Label "SSJ 100"	2

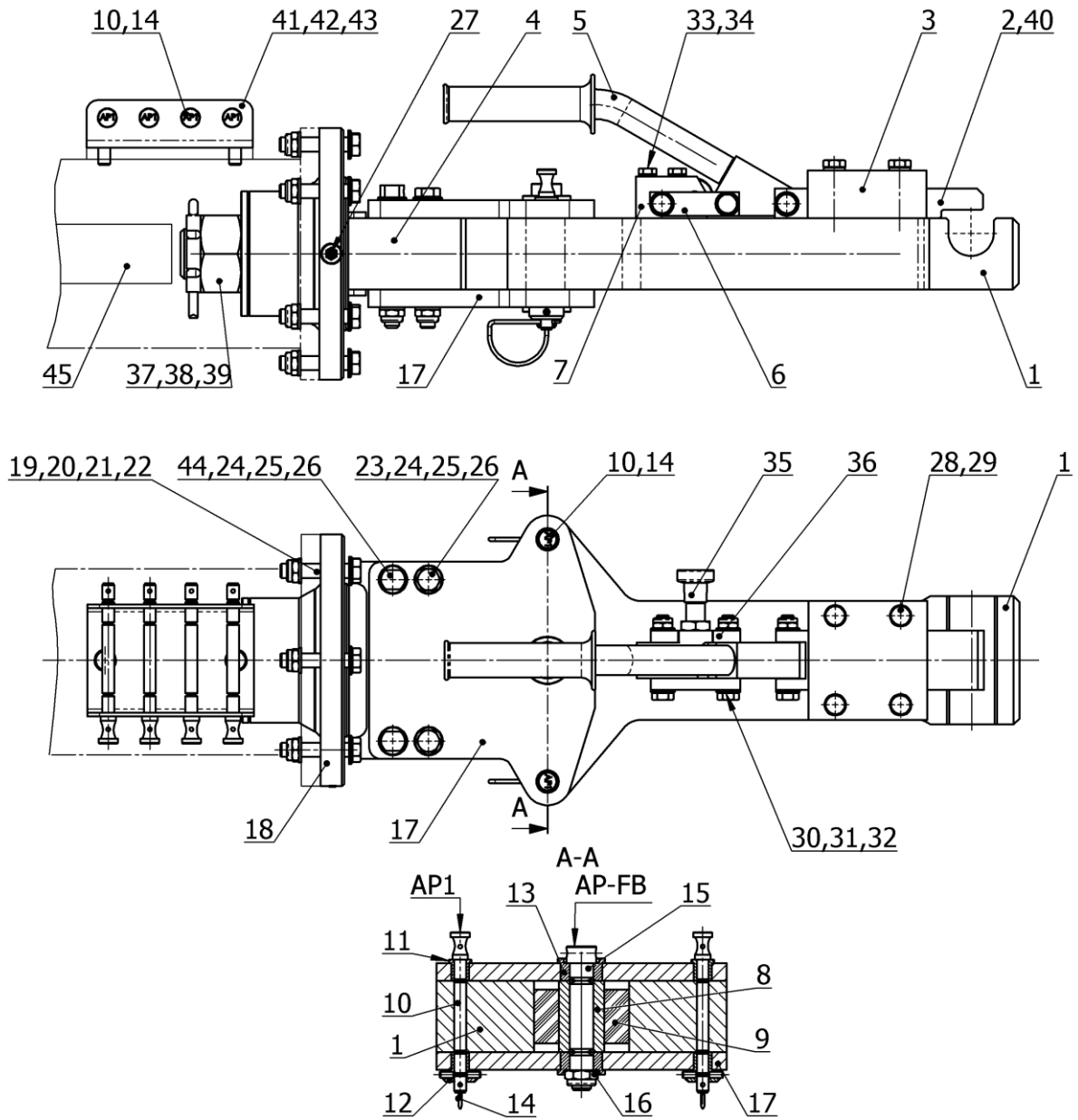
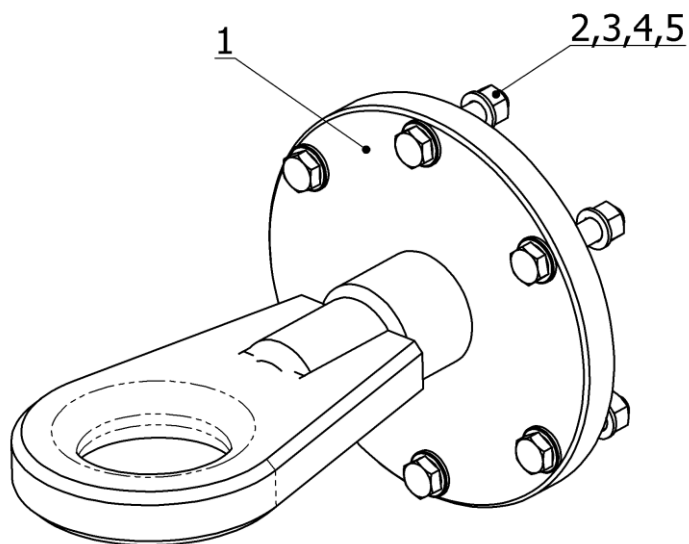


Figure 6.2: Towhead

### 1.3. Parts list - J-TOWeye - rigid - see figure 6.3

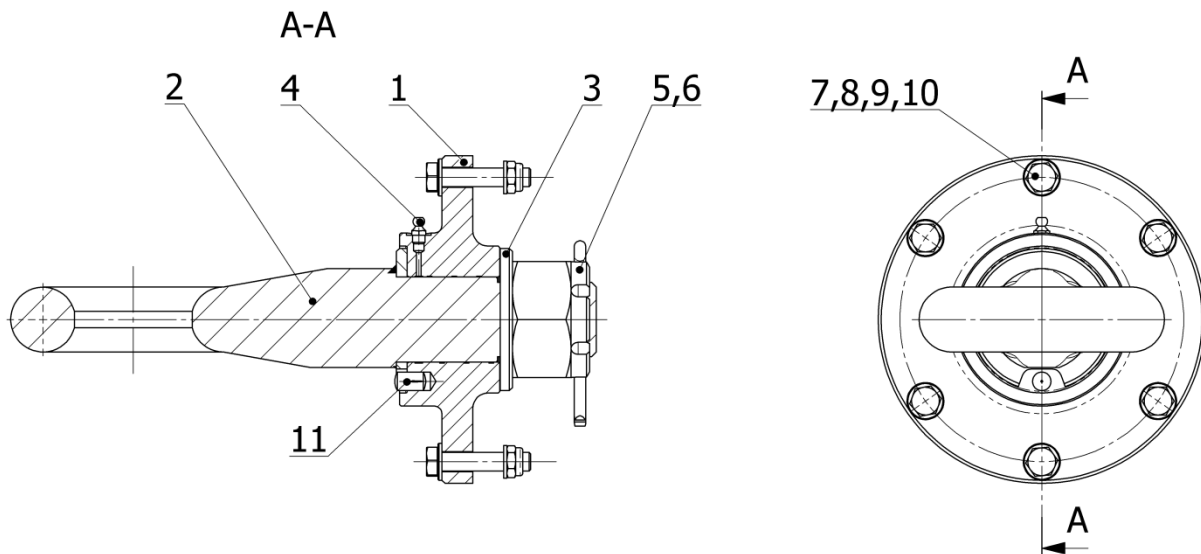
No.	WP	Part number	Designation	Quantity
Cpl.		08.40080.0003	Toweeye	1
consisting of:				
1		00.40080.0202	Towing eye	1
2		ISO4014-M12x60 10.9	Screw	6
3		ISO7090-13	Washer	6
4		00.38280.0002-42	Washer	6
5		ISO10511-M12 10	Nut	6



**Figure 6.3: Toweeye**

### 1.4. Part list - J-TOWeye, revolving - see figure 6.4 - OPTION -

No.	WP	Part number	Designation	Quantity
Cpl.		08.40080.0103	Toweye	1
consisting of:				
1		00.40080.0221	Flange	1
2		00.40080.0222	Towing eye	1
3		ISO7090-50	Washer	1
4		DIN71412-M8	Grease nippel	1
5		ISO1234-8x100	Cotter pin	1
6		DIN935-M48	Nut	1
7		ISO4014-M12x60 10.9	Screw	6
8		00.38280.0002-42	Washer	6
9		ISO10511-M12 10	Nut	6
10		ISO7090-13	Washer	6
11		DIN EN 28741 12x20	Grooved pin	1



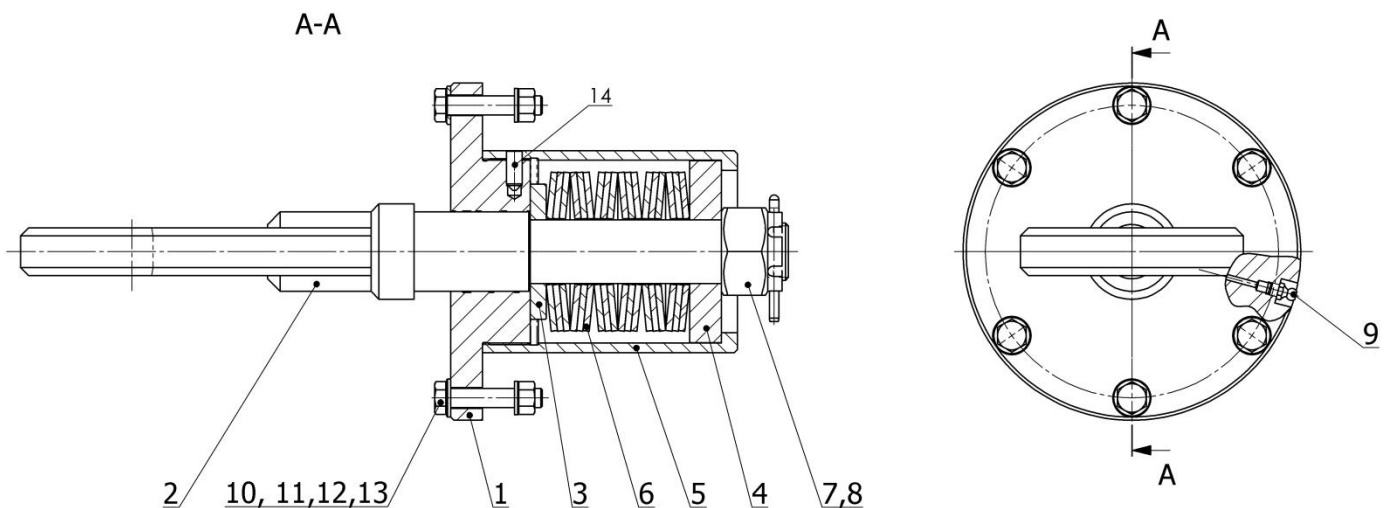
**Figure 6.4: Toweye**



### 1.5. Part list - J-TOWeye - shock abs. - see figure 6.5

- OPTION -

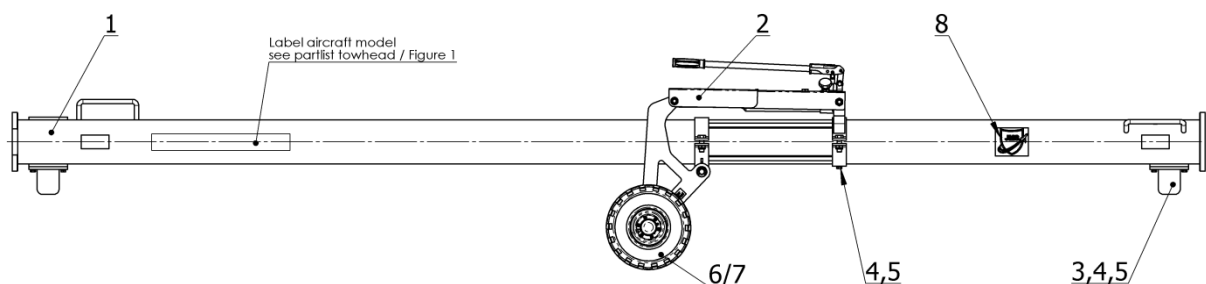
No.	WP	Part number	Designation	Quantity
Cpl.		08.40080.0203	ToweYe	1
consisting of:				
1		00.40080.0231	Flange	1
2		00.40080.0232	Towing eye	1
3		00.35800.0235A	Washer	1
4		00.35800.0236A	Washer	1
5		00.35800.0234B	Bushing	1
6		08.40080.0203-6	Cup spring	18
7		DIN935-M36x3	Castle nut	1
8		ISO1234 6,3x63	Cotter Pin	1
9		DIN71412-M8	Grease nipple	1
10		ISO 4014-M12x60 10.9	Screw	6
11		00.38280.0002-42	Washer	6
12		ISO10511-M12	Nut	6
13		ISO7090-13	Washer	6
14		ISO4027-M10x25	Screw	1



**Figure 6.5: ToweYe**

## 1.6. Parts list - J-TOWbody for SSJ100 - see figure 6.6

No.	WP	Part number	Designation	Quantity
1		00.40080.0301A	Tube	1
1.1 (Option)		20-00190-0111-000	Tube, split (not shown)	1
1.1.1 (Option)		20-00190-0111-010	Tube part 1 (Toweye side)	1
1.1.2 (Option)		20-00190-0111-020	Tube part 2 (Towhead side)	1
1.2 (Option)		ISO4014-M12x60 10.9	Screw (not shown)	6
1.3 (Option)		00.38280.0002-42	Washer (not shown)	6
1.4 (Option)		ISO10511-M12 10	Nut (not shown)	6
1.5 (Option)		ISO7090-13	Washer (not shown)	6
2.1 (Standard)		20-00190-0012-000	Carriage (see Figure 6.7 for details)	1
2.2 (Option)		20-00190-0112-000	Carriage (floating / s. Fig 6.9 for details)	1
3		00.35800.0351	Support	2
4		ISO4017-M10x20	Screw	5
5		00.38280.0300-20	Washer	5
6 (Standard)	4	<b>00.40060.0442-01</b>	<b>Tire</b> (ø300 air-inflated/incl. 6.1+6.2)	<b>2</b>
6.1		00.40060.0440-02	Cap (enclosed in 6)	2
6.2		00.40060.0442-03	Distance ring (enclosed in 6)	2
7 (Option)	4	<b>00.40060.0443-01</b>	<b>Tire</b> (ø300 punct.-proof/incl. 7.1+7.2)	<b>2</b>
7.1		00.40060.0440-02	Cap (enclosed in 7)	2
7.2		00.40060.0442-03	Distance ring (enclosed in 7)	2
8		20-00190-0015-000	Labelling	1



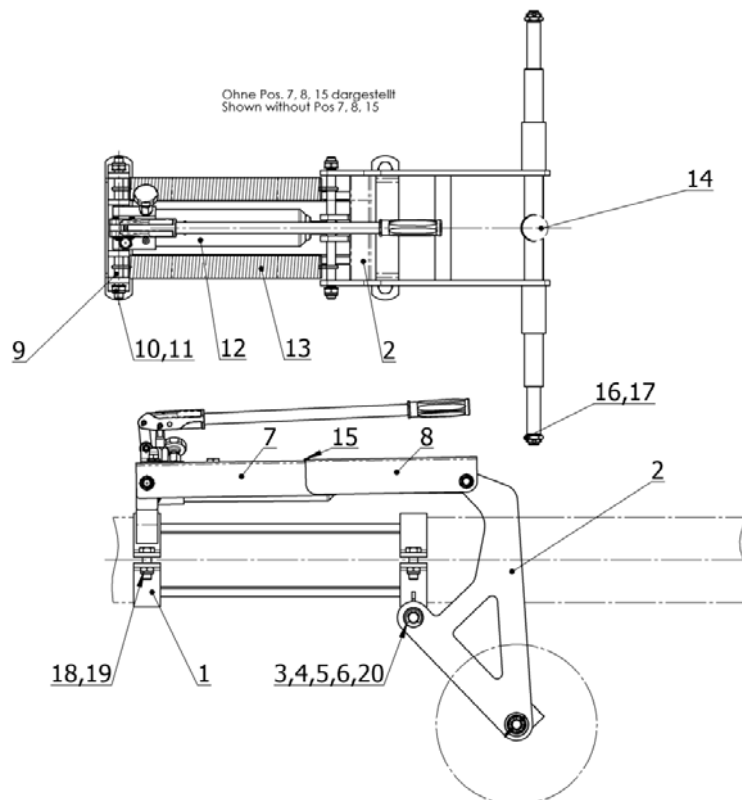
### In case of option 1.1:

For initial assembly after transportation please refer to chapter 6 for bolt tightening torques.

**Figure 6.6: Towbar and Carriage**

### 1.7. Parts list - J-TOWcarriage for SSJ100 - see figure 6.7

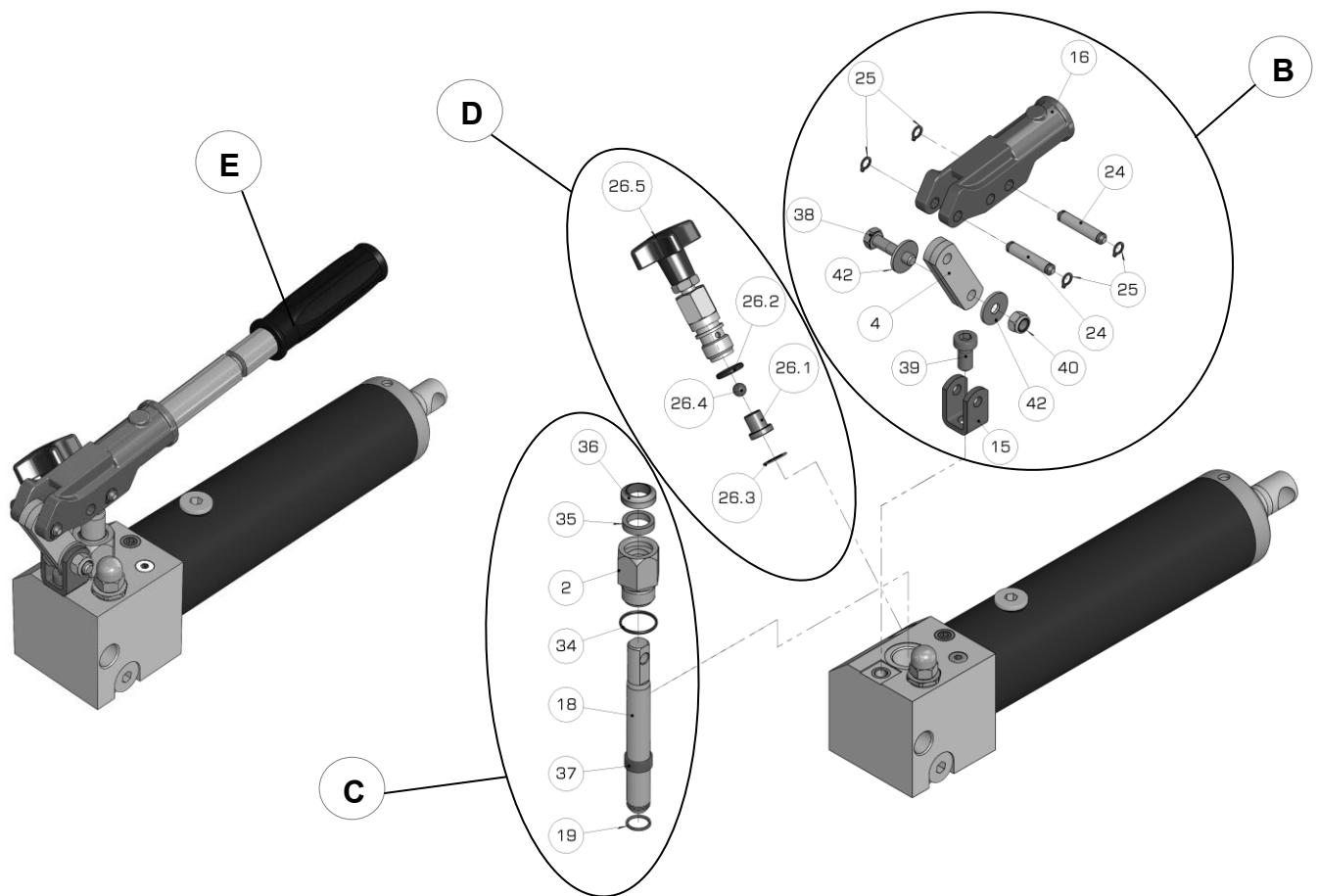
No.	WP	Part number	Designation	Quantity
1		00.40080.0451	Bracket	1
2		00.40080.0401	Carriage	1
3		00.40430.0484	Bolt	1
4		ISO7090-21	Washer	2
5		DIN6799-15	Washer	2
6		ISO8752-4x28	Pin	2
7		00.40060.0490A	Cover I	1
8		00.40060.0491A	Cover II	1
9		00.40060.0486A	Axis	2
10		00043	Washer	12
11		ISO10511-M16	Nut	4
<b>12</b>	<b>3</b>	<b>08.40060.0001-18</b>	<b>Handpump</b> (see Figure 6.8 for details)	<b>1</b>
13		08.40060.0001-13	Spring	2
14		00.38280.0240-12	Damper	1
15		08.40060.0001-12	Protection	0,2m
16		DIN937-M20x1,5	Nut	2
17		ISO1234-4x40	Cotter pin	2
18		ISO4017-M16x50	Screw	4
19		ISO10511-M16	Nut	4
20		00010	Bushing	2



**Figure 6.7: Carriage**

### 1.8. Parts list – hydr. handpump for J-TOW – see figure 6.8

No.	Part number	Designation	Quantity
Complete	08.40060.0001-18	Handpump	
A	08.40060.0001-18.1	Seal kit, consisting of all seals	1
B	00281	Kit I, consisting of: Pos. 4, 15, 16, 24, 25, 38, 39, 40, 42	1
C	00282	Kit II consisting of: Pos. 2, 18, 19, 34, 35, 36, 37	1
D	00079	Kit III consisting of: Pos. 26.1, 26.2, 26.3, 26.4, 26.5	1
E	00131	Pump lever incl. rubber grip	1

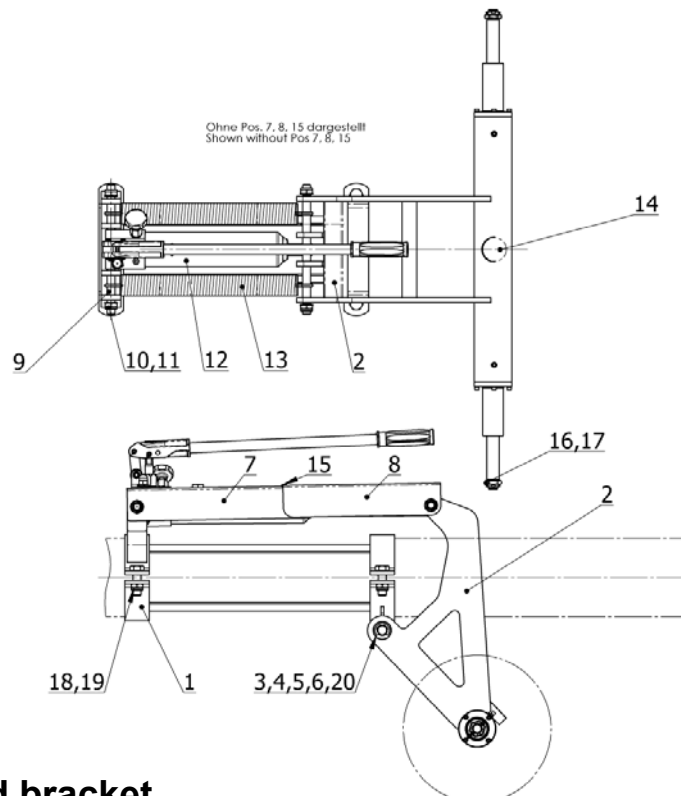


**Figure 6.8: handpump 08.40060.0001-18**

### 1.9. Parts list - J-TOWcarriage (floating) - see figure 6.9

- OPTION -

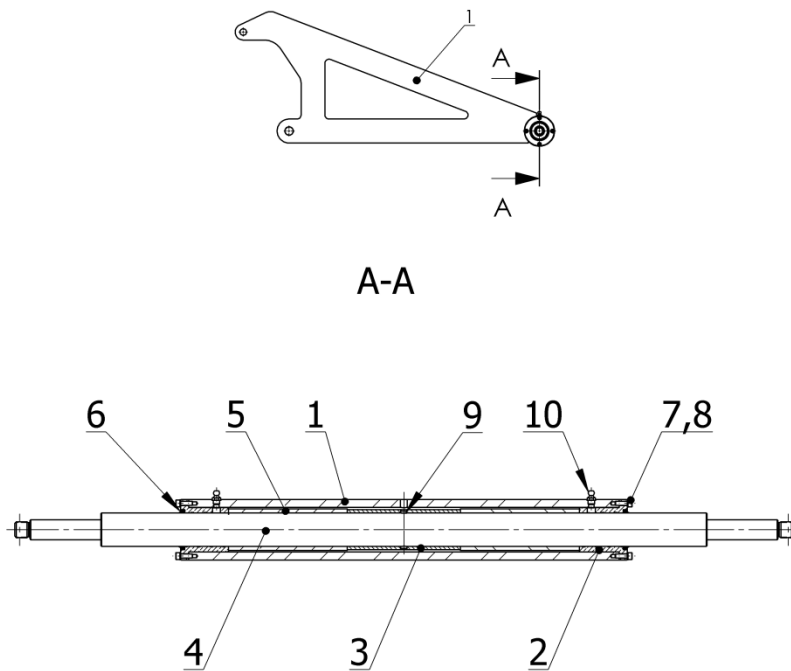
No.	WP	Part number	Designation	Quantity
1		00.40080.0451	Bracket	1
2		00.40080.0420	Carriage (floating) (see Figure 6.10 for details)	1
3		00.40430.0484	Bolt	1
4		ISO7090-21	Washer	2
5		DIN6799-15	Retaining washer	2
6		ISO8752-4x28	Pin	2
7		00.40060.0490A	Cover I	1
8		00.40060.0491A	Cover II	1
9		00.40060.0486A	Axis	2
10		00043	Washer	4
11		ISO10511-M16	Nut	4
<b>12</b>	<b>3</b>	<b>08.40060.0001-18</b>	<b>Handpump</b> (see Figure 6.8 for details)	<b>1</b>
13		08.40060.0001-13	Spring	2
14		00.38280.0240-12	Damper	1
15		08.40060.0001-12	Protection	0,2m
16		DIN937-M20x1,5	Nut	2
17		ISO1234-4x40	Cotter pin	2
18		ISO4017-M16x50	Screw	4
19		ISO10511-M16	Nut	4
20		00010	Bushing	2



**Figure 6.9: Carriage and bracket**

**1.10. Parts list - J-TOW floating carriage - see figure 6.10**  
 - OPTION -

No.	WP	Part number	Designation	Quantity
1		00.40080.0421A	Carriage (floating)	1
2		00.40060.0426A	Bushing	2
3		00.40060.0424	Bushing	1
4		00.40060.0425A	Axis	1
5		00.40060.0420-5	Spring	2
6		00.40060.0420-6	Seal	2
7		ISO4762-M5x16	Screw	8
8		00.39260.0200-7	Washer	8
9		ISO8752-8x50	Pin	1
10		DIN71412-M8	Grease nipple	2



**Figure 6.10: Floating carriage**